



The **Nitro** Professionals

NITROGEN GENERATOR SYSTEMS

INDUSTRIAL APPLICATIONS

AUTOMOTIVE.



COMMERCIALLY STERILE.

IDEAL FOR WINE BOTTLING, BLANKETING, AIRCRAFT INDUSTRY, FRUIT AND VEGETABLE PACKAGING, BIKE, CARS, CARAVAN, 4X4, LIGHT TRUCK TYRES, BUS, AIRCRAFT and LARGE TYRES, LASER CUTTING.

**2012
Catalogue.**



www.lunasolutions.com.au
 Contact: David Penaluna
 Ph: 0418 396 308



ABN: 70 957 842 085

NITROGEN GENERATOR SYSTEMS

INDEX

Page 1.003	Nitrogen Generators for Industrial applications and Flow Rate Specifications.
Page 1.004	Nitrogen Generators - Applications. Front Panel and Gauges.
Page 1.005	Benefits, Uses, Features for High Pressure Machines.
Page 1.006	Flow Rate Charts. Inlet and Outlet Pressures. Bottle Vs Machine Calculation Chart.
Page 1.007	Tyre Machines - Features and Specifications.
Page 1.008	Automatic Tyre Inflation System. Features and Specifications.
Page 1.009	Nitrogen Purity Tester. Nitrogen Advertising Banner. Refrigerated Air Dryers.
Pages 1010 1011	Nitrogen for Tyres, Safety and Benefits.
Page 1.012	Increased air / Nitrogen configuration. Tyre manufactures Nitrogen endorsements.



ABN: 70 957 842 085

www.lunasolutions.com.au
Contact: David Penaluna
Ph: 0418 396 308

***Nitro* Professionals**

NITROGEN GENERATOR SYSTEMS

INDUSTRIAL APPLICATIONS. High pressure.

Model HP - 500.

Model HP - 1500



Nitro Professionals

**COMMERCIALLY STERILE
NITROGEN**



MEMBRANE NITROGEN GENERATORS - HP SERIES.

FLOW RATE SPECIFICATIONS.

Flow Rates (m3/hr) @ 8bar @ 25c @ Purity %	95%	96%	97%	98%	99%	99.5%
Model HP 500	7.03	5.82	4.46	3.56	2.36	1.59
HP 1000	13.70	11.00	8.64	6.24	3.96	2.88
HP 1500	27.50	22.00	16.50	12.10	7.35	5.17
HP 3000	55.00	44.00	33.00	24.20	14.74	10.34
HP 4500	82.50	66.00	49.50	36.30	22.11	15.51
To convert the m3/hr table above to Lit/hr, multiply the figure by 1000.						

Model	HP 500	HP 1000	HP 1500	HP 3000 & 4500
Atmospheric Dew point	- 58° F (- 50 ° C)			
Min/Max Operating Pressure	4 Bar /10Bar			
Commercially Sterile	YES			
Min / Max Inlet Air Temperature	40° F / 140° F (4° C / 6° C)			
Recommended Inlet Air Temperature	77 ° F (25° C)			
Electrical Requirements	LED Oxygen Monitor Only. 100-240V (50-60HZ)			
Dimensions Model HP500 . HP 1000 to 4500	42 x 30 x 122cm	52 x 45 x 180 cm		
Weight Model HP500,1000,1500,3000, 4500.	72Kg	79Kg	82Kg	92Kg

NITROGEN GENERATOR SYSTEMS

INDUSTRIAL APPLICATIONS. High pressure.



MODEL HP3000 can produce up to 30,800 Litres of
Commercially Sterile
98% pure Nitrogen @ 10 bar inlet air flow per hour.



HP 3000 front panel shows the operation and outlet pressure gauges, pressure regulator and the LED Oxygen Analyzer.

Applications.

- **Wine bottling**
- **Laser cutting**
- **Nitrogen tank blanketing**
- **UV paint curing**
- **Food packaging**
- **Aircraft tire inflation / fuel tank sparging**
- **Aluminum extruding**
- **Carbon fiber curing**
- **Autoclaves**
- **Bacteria elimination**
- **Algae and sparging**
- **Fire suppression / prevention**
- **Laboratory**
- **Kiln / grain drying**
- **Electronics**
- **Fruit orchards / storage**

MARKET FOCUS: FOOD AND BEVERAGE PACKAGING.

Application: Wine Bottling

A nitrogen blanket, reducing the oxygen concentration to less than 0.5% minimizes contact between oxygen and the wine surface during storage (both pre and post bottling).

This will prevent the growth of bacteria and other microbes. Nitrogen can also be used to purge air from pipes and hoses prior to bottling and to ensure oxygen is not introduced during transport.

Finally, sparging with nitrogen will remove any oxygen or CO₂ introduced during handling helping to preserve wine integrity. A Nitro Pro Nitrogen Generator supplies a continuous stream of nitrogen to displace residual oxygen and fill the voids within the package, preserving taste and freshness.

NITROGEN GENERATOR SYSTEMS

INDUSTRIAL APPLICATIONS. High pressure.

BENEFITS AND USES for the HP Series machines.

On site Nitrogen Generation allows Companies' to produce "On Demand Dry Nitrogen" of purities up to 99.5%, thus eliminating the dependence on outside cylinder suppliers, cylinder rentals, uncontrollable price increases and to avoid unexpected production shutdowns caused by empty cylinders. Nitrogen Generators will also free up valuable floor space.

Once a generator is installed, a continuous supply of Nitrogen and Nitrogen Purity is available within minutes from start up.

There is no complicated operating procedure to learn or labor intensive monitoring involved. Simply select the purity your process requires, set the compressed air flow and pressure, and your machine is ready to go.

Nitro Professionals quality assurance.....

Nitro Professional nitrogen generators are fitted with high efficiency Coalescing Compressed Air pre Filters and Carbon Filters which protect your equipment and delicate instruments from the dirt, water, and oil usually found in compressed air. Coalescing Filters remove these contaminants at a very high efficiency up to 99.99% for 0.01 micron particles and droplets. Liquid releases from the filter cartridge to an automatic drain as rapidly as it enters the filter. This allows the Coalescing Filter to continue removing liquids for an unlimited time without loss of efficiency or flow capacity. The HP series include an oxygen monitor which offers an LCD screen and alarm which signals high or low oxygen concentrations determined by the application. The only maintenance required during the life of the machine involves changing the filter cartridges and activated carbon filter periodically. (A refrigerated Air dryer is an added advantage to prolong the life of membrane machines. Please refer to pagefor information relating to dryers.)



FEATURES.

The **Nitrogen Generation Membrane Separation Technology** process takes compressed air and separates it into two streams: One is 95% - 99% pure, commercially sterile Nitrogen, the second is oxygen enriched with carbon dioxide and other gases.

- Commercially Sterile
- Purities from 95% - 99.5% plus.
- No operation attention required. Easy to operate
- Lower cost than purchasing bottled Nitrogen.
- Compact. Frees up valuable floor space.
- Reduced system and operational costs.
- Increased system reliability.
- Highly reliable continuous supply 24 / 7.
- Safe and reliable.

BENEFITS.

- Lower costs, eliminates the need for costly cylinders or bulk liquid systems. (As much as 50% savings)
- Compact, frees up valuable floor space when compared to cylinders. (see photograph comparison)
- Eliminates unexpected shutdowns due to empty cylinders or delivery delays.
- Easy to install and operate. Safe and reliable.
- Environmentally safe— No truck/ tanker deliveries, no fork lifting cylinders to confined spaces, no greenhouse gas emissions.

NITROGEN GENERATOR SYSTEMS

HFX-series N2 production capacity and air consumption at minimum capacity
at nominal condition - 20°C; ambient pressure 1013mbar(a); max. air drop less than 0.3bar.

Updated on Nov. 15, 2011

Note:

- 1 Nm³/hr = 35.31467 scfh = 0.58858 scfm
- In practise, we strongly recommend the scfm from compressor to be doubled the following air consumption value to obtain the required output flow rate.

A. Inlet air flow rate at 10 bar -

Model		N2 Purity					
		99.5%	99%	98%	97%	96%	95%
HP 500	air consumption (Scfm)	8.89	9.53	10.48	11.18	12.42	13.48
	N2 consumption (Nm ³ /hr)	15.10	16.20	17.80	19.00	21.10	22.90
	N2 output(Scfm)	1.17	1.74	2.62	3.28	4.28	5.17
	N2 output(Nm ³ /hr)	1.99	2.95	4.45	5.58	7.28	8.79
HP 1000	air consumption (Scfm)	19.19	19.60	21.07	23.72	26.02	27.90
	N2 consumption (Nm ³ /hr)	32.60	33.30	35.80	40.30	44.20	47.40
	N2 output(Scfm)	2.26	3.11	4.90	6.77	8.65	10.71
	N2 output(Nm ³ /hr)	3.84	5.28	8.32	11.50	14.70	18.20
HP1500	air consumption (Scfm)	32.90	34.79	38.96	43.26	49.44	53.56
	N2 consumption (Nm ³ /hr)	55.90	59.10	66.20	73.50	84.00	91.00
	N2 output(Scfm)	3.87	5.52	9.06	12.36	16.48	20.60
	N2 output(Nm ³ /hr)	6.58	9.38	15.40	21.00	28.00	35.00
HP 3000	air consumption (Scfm)	65.80	69.57	77.93	86.52	98.88	107.12
	N2 consumption (Nm ³ /hr)	111.80	118.20	132.40	147.00	168.00	182.00
	N2 output(Scfm)	7.75	11.04	18.13	24.72	32.96	41.20
	N2 output(Nm ³ /hr)	13.16	18.76	30.80	42.00	56.00	70.00

B. Inlet air flow rate at 8 bar -

Model		N2 Purity					
		99.5%	99%	98%	97%	96%	95%
HP 500	air consumption (Scfm)	7.00	7.47	8.36	8.95	9.95	10.77
	N2 consumption (Nm ³ /hr)	11.90	12.70	14.20	15.20	16.90	18.30
	N2 output(Scfm)	0.94	1.39	2.10	2.63	3.43	4.14
	N2 output(Nm ³ /hr)	1.59	2.36	3.56	4.46	5.82	7.03
HP 1000	air consumption (Scfm)	14.42	14.66	15.77	17.78	19.48	20.95
	N2 consumption (Nm ³ /hr)	24.50	24.90	26.80	30.20	33.10	35.60
	N2 output(Scfm)	1.70	2.33	3.67	5.09	6.47	8.06
	N2 output(Nm ³ /hr)	2.88	3.96	6.24	8.64	11.00	13.70
HP 1500	air consumption (Scfm)	25.84	27.31	30.61	34.02	38.85	42.08
	N2 consumption (Nm ³ /hr)	43.90	46.40	52.00	57.80	66.00	71.50
	N2 output(Scfm)	3.04	4.34	7.12	9.71	12.95	16.19
	N2 output(Nm ³ /hr)	5.17	7.37	12.10	16.50	22.00	27.50
HP 3000	air consumption (Scfm)	51.68	54.62	61.21	68.04	77.69	84.17
	N2 consumption (Nm ³ /hr)	87.80	92.80	104.00	115.60	132.00	143.00
	N2 output(Scfm)	6.09	8.68	14.24	19.42	25.90	32.37
	N2 output(Nm ³ /hr)	10.34	14.74	24.20	33.00	44.00	55.00

Calculation conversions.

- 1 x m³/hr = 1000 lit/hr
- 1 x m³/hr = 35.31467 cf/sec
- 1 x kPa = 6.895cfm
- 1 x kw = 1.34hp (electric)
- 1 x cfm = 1699 lit/hr
- 1 bar = 14.5 psi
- 1000 kPa = 1 Bar
- 1 x h/p = 0.746 kw

Calculate your current Nitrogen costs

-Bottles p.month @ \$.....each = \$.....p.m.
-Bottle rent p.m. @ \$.....each = \$.....p.m.
- Delivery charges p.m. \$.....each = \$.....p.m.
- Cost per year (x 12) = \$.....p.yr.
- Multiply x 4 years amortization
- Bottle size used. (cub/m per Bottle used.).....
-cub/m x bottles used.....x 1000 = .. litres
- Litres per month used.....



www.lunasolutions.com.au

Contact: David Penaluna

Ph: 0418 396 308

Nitro Professionals

NITROGEN GENERATOR SYSTEMS....Automotive.

PRODUCT DATA SHEET

Model NR250



Model NR500AF



FEATURES

Generates nitrogen at a rate of : 2,880 litres/hr - NR250, 7,020 litres/hr - NR500 @ 8bar inlet pressure.
 A large 84 litre storage tank
 Triple high grade separation system

*SPECIFICATIONS

MODEL	NR250 SERIES	NR500 SERIES
Recommended Input Pressure (cfm)	4.47 cfm (116 psi)	10.77cfm (116 psi)
Purity of Nitrogen	95-99.9%	95-99.9%
Storage tank size	84 litres	84 litres
Output Pressure	1.72 cfm (116 psi)	4.14cfm (116 psi)
Nitrogen Capacity	48 litres/ min	117 litres/min
Dimensions	520x300x1220mm	650x360x1320mm
Weight	82 kgs	99 kgs

* NitroRide machines are designed in the UK and manufactured in Taiwan



ABN: 70 957 842 085

www.lunasolutions.com.au
 Contact: David Penaluna
 Ph: 0418 396 308

Nitro Professionals

NITROGEN GENERATOR SYSTEMS..for Automotive applications.



NR500AF Front Panel.



NR 500 AF...with Integrated Automatic Filling Device

Targeted Returns for your Investment

<u>Number of Vehicles per Month</u>	<u>Number of Tyres per Vehicle</u>	<u>Service Cost per Car</u>	<u>Income per Month</u>	<u>Machine Cost *NL250AF</u>	<u>Number of Months to Pay for Machine</u>
20	5	\$50	\$1000	\$7500	7.5 months
30	5	\$50	\$1500	\$7500	5.0 months
40	5	\$50	\$2000	\$7500	3.75 months
50	5	\$50	\$2500	\$7500	3.0 months
60	5	\$50	\$3000	\$7500	2.5 months
70	5	\$50	\$3500	\$7500	2.2 months

This chart is for example purposes only. Actual selling prices can be varied.
For example, service prices can be increased for larger tyres such as 4WD and light trucks.



ABN: 70 957 842 085

www.lunasolutions.com.au
Contact: David Penaluna
Ph: 0418 396 308

Nitro Professionals

NITROGEN GENERATOR SYSTEMS

PRODUCT DATA SHEET

AUTOMATIC INFLATION SYSTEM as used in MODELS NR250AF and NR500AF and also SOLD SEPARATELY

MODEL AF 150features.

- Two large LED displays showing preset pressure and actual pressure.
- Self-calibrating fault diagnostics every time you switch on.
- Sleep mode activates when not being used.
- Reads in both psi and bar.
- Auto stops with an audible sound when the procedure is completed or if a problem occurs.
- Bead seating function allows the tyre to be over inflated and then deflated to the pre-set pressure fully automatically.
- The N2 option purges the tyre of oxygen in preparation for filling with nitrogen.
- Auto inflates for multiple tyre inflation.



SPECIFICATIONS

MODEL AF 150	NR250 SERIES	NR500 SERIES
Operating system	-10°C ~ +50°C	
Supply Voltage	100-240V, 50/60 Hz, 45W	
Display	8 Digit LED	
Operating Principle	Microprocessor Digital Control	
Maximum Inlet Air Supply	150 Psi (12Bar)	230 Psi (16 Bar)
Minimum Input Air Supply	5 Psi (0.3 Bar)	
Operating Pressure Range (Outlet)	3 ~ 150 Psi (0.2 ~ 10.5 Bar)	3 ~ 200 Psi (0.2 ~ 14 Bar)
Precision	1 Psi	
Units of Measurement	Psi, Bar	
Bead Seating	0-100% Over- inflation of Target Pressure	
N2 Function	1-5 Variable purge cycles with variable deflation threshold (15% to 30 %)	
Automatic Inflation	Skip pressing START button for multiple tyre inflation. Variable pre-sets	



www.lunasolutions.com.au
Contact: David Penaluna
Ph: 0418 396 308

Nitro Professionals

ABN: 70 957 842 085

NITROGEN GENERATOR SYSTEMS

PRODUCT DATA SHEET



NitroPro N2 Purity Tester.

- Convenient and reliable hand-held device
- Quickly and accurately tests nitrogen tank purity
- Quickly and accurately tests tyre purity
- Provides your customers with a professional display, validating your service

Advertising Wall Banner

220cm

90cm

Nitrogen Tyre Filling Service

- Better Tyre Pressure
- Improved Fuel Economy
- Increased Safety
- Longer Tyre Life
- Superior Handling

Nitro Professionals

Refrigerated Air Dryers.

'FRIGEMATIC'
compressed **AIR DRYERS**
since 1960

AUSTRALIA'S OWN

For installation convenience Models ADX1090 to ADX5040 are supplied with dual INLET & OUTLET Flanges at front & rear.

ADX Series
Brochure update May 2002

Made in Australia for reliable performance in this sunburnt country

with a **20 years warranty** against refrigerant leaks of compressed air heat exchangers.

Performance and longevity of compressed air dryers are **CRITICALLY DEPENDENT** on the **QUALITY** of their **COMPRESSED AIR HEAT EXCHANGERS**.

Refrigerant leaks in compressed air heat exchangers are caused by internal corrosion or joint failures or tube bursting through ice expansion on freeze-up. Consequential air entry into the refrigeration systems leads to its destruction.

Since purchasers are not able to assess the quality of an air dryer's heat exchangers **PRUDENCE DICTATES to insist on a LONG TERM MANUFACTURERS WARRANTY** against refrigerant leaks of compressed air heat exchangers.

AVAILABLE FROM

AUSTRALIAN MADE.

20 YEAR WARRANTY.

Frigematic Air Chiller / Separators.

This unique construction eliminates internal corrosion and guarantees undiminished performance for decades as is proven in thousands of Installations since 1960.



ABN: 70 957 842 085

www.lunasolutions.com.au
Contact: David Penaluna
Ph: 0418 396 308

Nitro Professionals

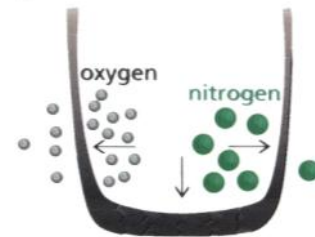
HOW NITROGEN WORKS and WHAT IT DOES

“TYRE SAFETY-EVERYTHING RIDES ON IT”

Nitrogen (N₂) makes up the majority of the air that we breathe (78%) and is contained in the protein of all life on earth. It is colourless, tasteless and non-toxic. The next most common component of air is oxygen (O₂). Together N₂ and O₂ make up approximately 99% of the air that we breathe and with which we traditionally fill tyres.

N₂ IS A LARGER MOLECULE THAN O₂.

Therefore, it cannot and does not permeate as easily as oxygen through porous material such as a rubber tyre wall. Leaking at a much slower rate than oxygen, a tyre filled with a higher percentage of N₂ maintains its proper pressure roughly three to four times longer than air-filled tyres. Proper inflation provides better fuel economy, superior handling, longer tyre life and increased safety by reducing the likelihood of low pressure related loss of control, blowouts and other tyre failures.



N₂ IS A DRY, INERT GAS

O₂ in a tyre provides unwanted oxidation. Over time, this reaction destroys the tyre wall and corrodes wheels. A tyre is prematurely aged by O₂ from the inside-out as the pressurized air in the tyre makes the O₂ try to escape through the tyre wall, speeding up the damaging oxidation process. N₂ on the other hand, is a harmless inert gas that does not react negatively with the tyres and wheels. N₂ filled tyres also reduce tyre heat, thereby decreasing rolling resistance and increasing fuel economy.

N₂ IS NON-FLAMMABLE

O₂ is a flammable gas while N₂ is an extinguishing gas. Thus, a large number of mass transportation companies around the world fill their tyres with N₂ for added fire and explosion safety. In a vehicle fire, ruptured air-filled tyres fuel the fire. N₂ filled tyres slow the fire.

N₂ has been used in tyres for many years on aircraft, military vehicles, off road trucks, racecars and Tour de France bicycles.

NITROGEN INFLATED TYRES ARE SAFER and LONGER LASTING THAN TYRES INFLATED WITH “WET OXYGEN” in COMPRESSED AIR

Nitrogen inflated tyres do not age as quickly as air inflated tyres.

Nitrogen inflated tyres improve vehicle handling through proper inflation and constantly maintained pressure.

Nitrogen inflated tyres minimize blowouts.

Nitrogen is an inert, non-combustible and non-flammable gas.

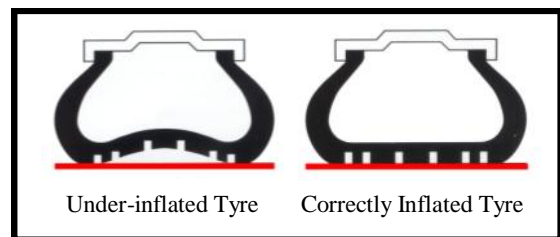
Nitrogen is a stable gas providing more constant pressure.

THE EFFECTS of UNDER INFLATION ON TYRE WEAR and FUEL USE

CORRECT INFLATION IS THE SINGLE MOST IMPORTANT FACTOR IN TYRE CARE

It is also the single most overlooked item recognized by service agents during maintenance visits. It is not uncommon to have to add inflation pressures to all tyres.

Percentage of Under-Inflation	Percentage Wear Increase	Fuel Use Increase
10%	5%	2%
20%	16%	4%
30%	33%	6%
40%	57%	8%
50%	78%	10%



Correct inflation is highly significant when considering tyre life and performance. It is not always possible to look at a tyre and detect under-inflation. However, under-inflation can cause many tyre related problems. As inflation pressure largely determines a tyre's load capacity, under-inflation results in an overloaded tyre. An under-inflated tyre operates at high deflection resulting in decreased fuel economy, sluggish handling and may result in excessive mechanical flexing and heat build up, leading to tyre failure.



ABN: 70 957 842 085

www.lunasolutions.com.au
Contact: David Penaluna
Ph: 0418 396 308

Nitro Professionals

TYRE FUNCTIONS

Tyres, assisted with the correct pressures contained within them, perform four important functions.

1. Tyres support the vehicle chassis off the ground.
2. Tyres help absorb shocks from the road surface.
3. Tyres help to transmit acceleration, braking and cornering forces to the road surface.
4. Tyres help to change and maintain the direction of travel.

NONE OF THESE TYRE FUNCTIONS CAN PERFORM CORRECTLY WHEN TYRES ARE UNDER OF OVER INFLATED.

OVERALL SUMMARY

IS NITROGEN BETTER IN TYRES THAN COMPRESSED AIR?

YES, BECAUSE...

All conditions being the same, the difference in tyre running temperatures when comparing nitrogen with compressed air for tyre inflation is due to the presence of water in compressed air more than any other factor. As a tyre is run, flexing of the sidewalls and tread, as well as the friction between the tread and the road surface produces heat regardless of what gas is used to inflate the tyre. The water molecules in the compressed air behave quite differently compared to the nitrogen molecules when exposed to the heat produced by the running of a tyre. Water molecules become much more agitated by the heat generated by the running of a tyre, creating more heat & pressure build-up compared to a nitrogen inflated tyre.

For decades nitrogen has been used in applications where safety and economy are extremely important - Aircraft tyres, Formula One, Tour de France, military and the space shuttles, to name a few.

Only the high cost and complexities of generating and storing nitrogen have kept it out of reach of the general public. Recent advances in nitrogen production technology have made on-site generation economically viable for the automotive service industry.

It should also be noted that nitrogen cannot replace regular maintenance. Regardless of what inflation gas is used, maximum tyre life will only be achieved if the vehicle and tyres are properly maintained. That means regular checking of tyre pressures, wheel balancing, wheel alignment and tyre rotation.



ABN: 70 957 842 085

www.lunasolutions.com.au

Contact: David Penaluna

Ph: 0418 396 308

***Nitro* Professionals**



INCREASED VOLUME REQUIREMENT

To increase the storage capacity of the generated nitrogen, single or multiple receivers can be added to suit the volume of nitrogen required for usage.

<i>They endorse Nitrogen for tires!</i>	
	"Goodyear supports the use of nitrogen, based on the ability of the tire to retain pressure for a longer period of time."
	"Nitrogen can provide stronger casings for more retread ability."
	"While both nitrogen & oxygen can permeate rubber, nitrogen does it much more slowly."
	"When nitrogen is used as the inflation media, the change in rubber properties is significantly slowed down or even halted."
	Michelin supports the use of Nitrogen, based on its ability to better retain gas volume over a period of time.
	"Tires inflated with Nitrogen will run cooler than those inflated with air. Nitrogen bleeds through the inner liner or tube at a slower rate than regular compressed air."
	"Nitrogen reduces the risk of self ignition and tire burst, if tires are overheated. Due to its the reliability, we are very satisfied with this service."
	"Even the most energy-saving tires lose efficiency if under-inflated. Nitrogen inflation systems help maintain tire pressure because nitrogen does not permeate through tires as readily as air does. Since the oxygen in air accelerates tire wear, a 100% nitrogen fill is kinder to tires, as well." EPA (Environmental Protection Agency - Federal Government)
	"Nitrogen is slower to leak out through the casing than air and does not carry moisture that can lead to rust in steel cords and cables."
	Recently, nitrogen gas (for use in inflating tires) has become available to the general consumer through many retailers. General Motors does not oppose the use of purified nitrogen as an inflation gas for tires. Nitrogen inflation can provide benefit by reducing gas migration (pressure loss) at the molecular level through the tire structure. NHTSA (National Highway Traffic Safety Administration) has stated that the inflation pressure loss of tires can be up to 5% a month. Another potential benefit of nitrogen is the reduced oxidation of tire components.

Some of the information contained in this brochure has been taken from OEM catalogues and OEM internet sites.



ABN: 70 957 842 085

www.lunasolutions.com.au
 Contact: David Penaluna
 Ph: 0418 396 308

